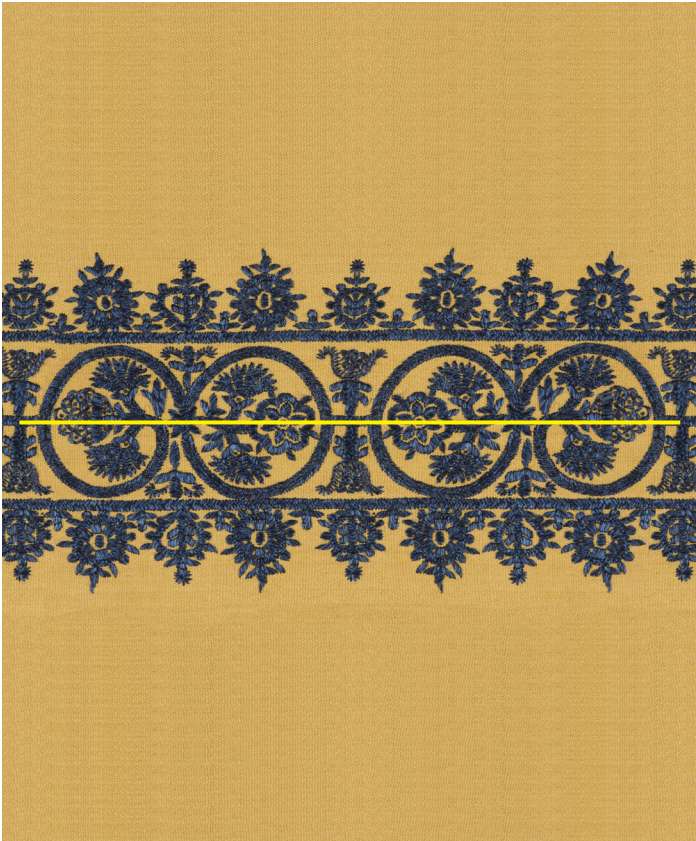


Rhodes Deep Indigo(Custom) | RHO-CUS

Translation of an 18th Century skirt border from the Greek island of Crete.



Design	Rhodes
Colour	Deep Indigo(Custom)
Code	RHO-CUS
Composition	100% Silk
Width	17.5cm / 7in
Repeat	36.5cm (h) 14.5in (h)
Weight	g
Notes



Rhodes Deep Indigo(Custom) | RHO-CUS

www.namaysamay.com

